

JLG6-210



JLG Series Pure GEL battery

Applications

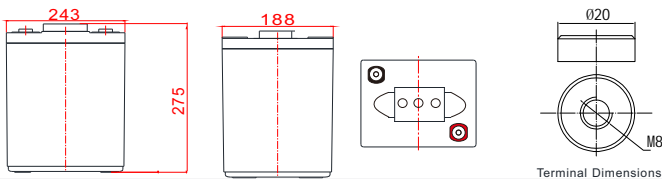
- > Solar / wind energy and other new energy storage
- > UPS/EPS
- > Power systems
- > Telecommunications system
- > Emergency lighting、Auto control system
- > Other general purpose

General Features

- > Nanosilica colloidal electrolyte and high tin positive plate alloy design to enhance battery performance
- > Relatively rich electrolyte, high temperature and low temperature performance is superior
- > Long cycle life, excellent deep cycle discharge ability
- > Excellent charge acceptance ability
- > Precision sealing technology
- > Long life



Dimension: 243(L)×188(W)×275(H)×275(TH) Unit: mm



Specification

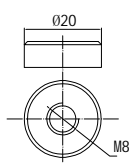
Nominal Voltage	6V	
Nominal Capacity	210Ah	
Design life	10 years	
Terminal	M8	
Approx. Weight	Approx 29.5kg (65.04lbs)	
Container Material	ABS	
Rated Capacity	210.0Ah	20Hour Rate (10.5A to 5.25V)
	157.5Ah	3Hour Rate (52.5A to 5.10V)
	116.0Ah	1Hour Rate (116A to 4.80V)
Internal resistance	Full charged at 25°C:	3.5 mΩ
Max. Discharge Current	2520A(5S)	
Operating Temperature	Discharge:	-40 ~60°C(-40~ 140°F)
	Charge:	-20 ~50°C(-4~ 122°F)
	Storage:	-20 ~50°C(-4~ 122°F)
Charge current:	Max. 52.5A ; Recom.21.0A	
Charge Method (25 °C)	Float Charge:	6.75-6.90V, recom.6.75V(-9mV/ °C)
	Equalize charge:	6.90-7.05V, recom.7.05V(-12mV/ °C)
	Cycle charge:	7.20-7.50V, recom.7.20V(-15mV/ °C)
Self discharge	3% of capacity declined per month at 25°C	

Constant Current Discharge Characteristics Unit: A (25°C, 77°F)

FV/Time	5min	10min	15min	30min	45min	1h	1.5h	2h	3h	4h	5h	6h	8h	10h	20h
1.60V	608	404	326	200	142	116	80.4	66.6	53.8	38.5	36.1	28.5	23.4	19.8	10.7
1.65V	587	401	317	196	141	115	79.6	66.2	53.4	38.2	35.9	28.2	23.2	19.6	10.6
1.70V	565	398	309	192	140	115	78.8	65.7	52.5	37.8	35.4	27.9	23.0	19.4	10.5
1.75V	519	392	298	191	138	113	78.0	64.7	51.9	37.4	35.0	27.7	22.8	19.2	10.5
1.80V	465	382	280	183	135	110	77.3	63.6	51.6	37.1	34.1	27.4	22.7	19.0	10.5
1.85V	415	354	248	167	125	102	74.9	60.3	48.7	35.9	32.4	26.6	21.7	18.4	10.3

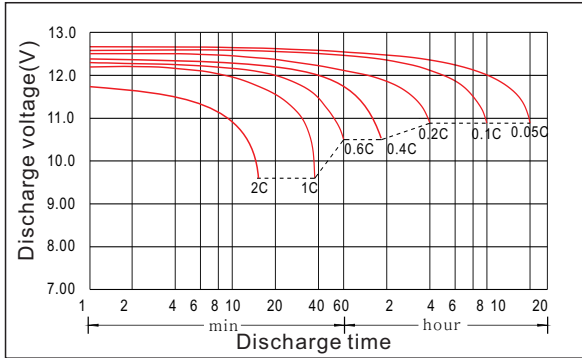
Constant Power Discharge Characteristics Unit: W/cell (25°C, 77°F)

FV/Time	5min	10min	15min	30min	45min	1h	1.5h	2h	3h	4h	5h	6h	8h	10h	20h
1.60V	1024	687	577	362	264	220	160	126	102	76.0	68.5	55.7	45.6	38.0	21.1
1.65V	984	681	568	358	262	218	159	125	101	75.2	68.1	55.1	45.2	37.6	21.0
1.70V	978	675	561	358	260	216	157	125	101	74.3	67.7	54.5	45.0	37.2	20.9
1.75V	911	669	557	356	257	214	156	124	100	73.9	67.2	54.2	44.8	36.9	20.8
1.80V	836	663	525	346	255	213	154	124	100	73.0	66.4	53.6	44.1	36.5	20.7
1.85V	741	615	466	317	237	197	151	118	94.8	71.8	63.4	52.6	42.9	35.9	20.5

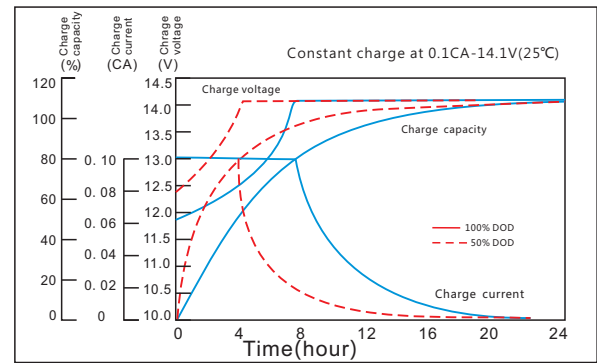


JLG6-210

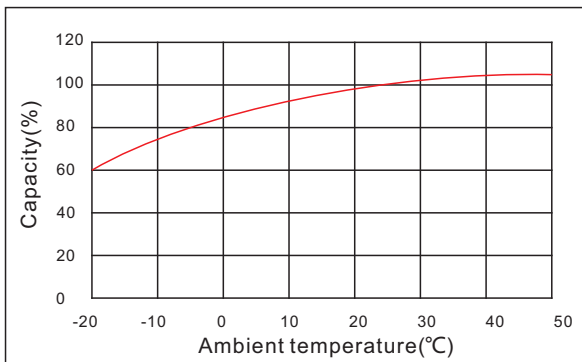
Discharge characteristic



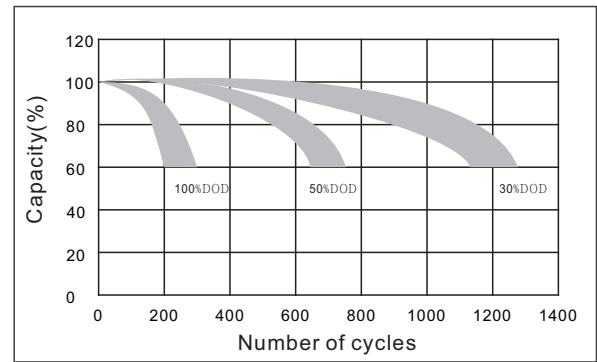
Charging characteristic



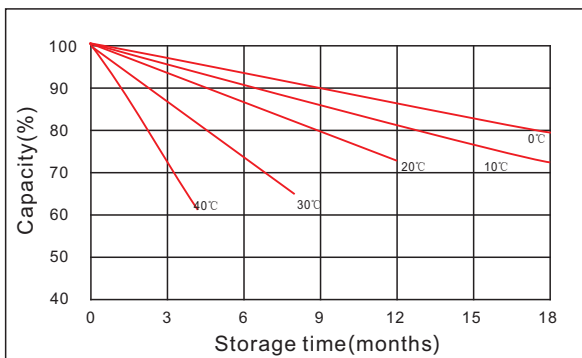
The effect of temperature on capacity



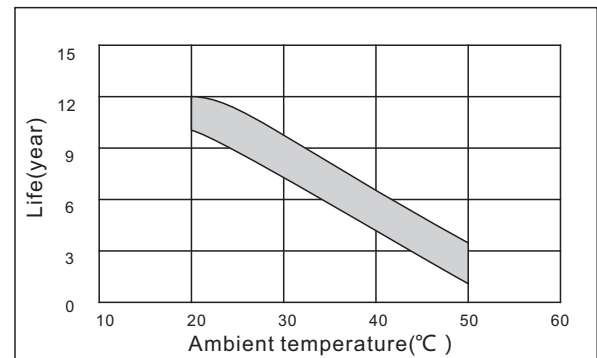
The effect of discharge depth on cycle life



Curves of self-discharge



The effect of temperature on float life



www.kijo.com.cn info@kijo.com.cn

Jiangxi Jingjiu Power Science&Technology Co. Ltd.
Add: 1388 Fushan No.1 Street, Xiaolan Economic Development Zone, Nanchang City, Jiangxi Province, China.

+86-791-85982779 +86-791-85989842

Jiangxi Jingjiu Power (Jiujiang) Co. Ltd.
Add: Xiwang Rd, Aicheng Industrial Park, Yongxiu Country, jiujiang City, Jiangxi Province, China.

