

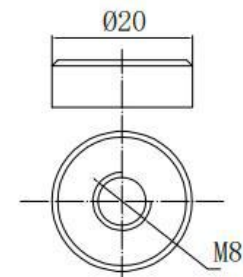
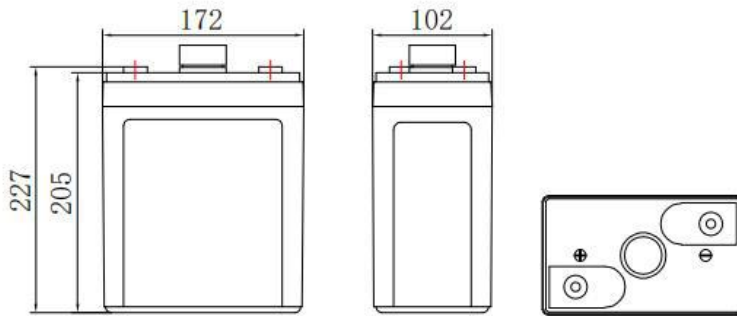
General Features

- ▶ High corrosion resistant performance: Pb-Ca multi-alloy grid
- ▶ Excellent charge acceptance ability
- ▶ Excellent deep cycle discharge capability
- ▶ Strong high and low temperature performance
- ▶ Precision sealing technology
- ▶ Long life



Dimension: 172(L) × 102(W) × 205(H) × 227(TH)

Unit: mm



Terminal Dimensions

Specification	
Nominal Voltage	2V
Nominal Capacity	150Ah
Design life	12 years
Terminal	M8
Approx. Weight	Approx 7.8kg (17.2lbs)
Container Material	ABS
short-circuit current	2222A
Internal resistance(Full charged at 25°C:)	0.90 mΩ
Self discharge	3% of capacity declined per month at 25°C
Operating Temperature	
Discharge:	-20 ~50°C(-4~ 122°F)
Charge :	-20 ~50°C(-4~ 122°F)
Storage:	-20 ~50°C(-4~ 122°F)
Charge Method(25 °C)	
Charge current:	Max. 30.0A;Recom.15.0A
Float charge:2.23-2.27V	recom.2.25V(-3mV/ °C)
Equalize charge:2.30-2.35V	recom.2.35V(-4mV/ °C)
Cycle charge:2.40-2.50V	recom.2.40V(-5mV/ °C)

Standards

Executive standard YD/T 799-2010

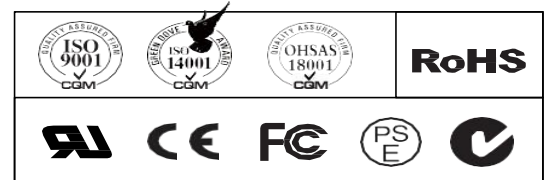
Applications

- ▶ UPS/EPS
- ▶ Power systems
- ▶ Telecommunications system
- ▶ Auto control system
- ▶ Solar/wind generating storage cyclic
- ▶ Other general purpose

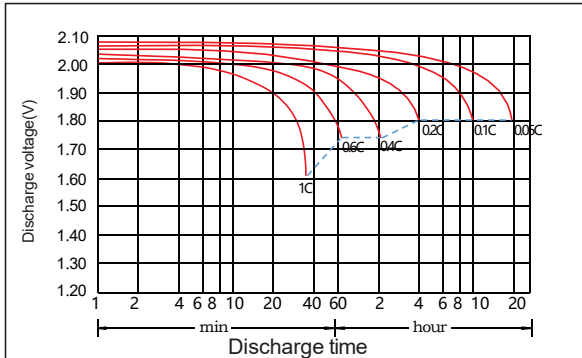
Rated Capacity

10Hour Rate (15.0A to 1.80V)	150.0Ah
3Hour Rate (37.5A to 1.80V)	112.5Ah
1Hour Rate (82.5A to 1.75V)	82.5Ah

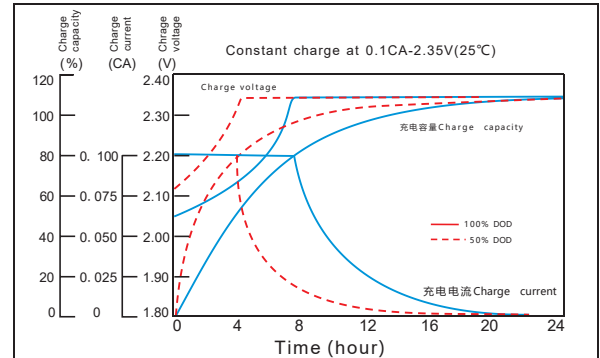
Attain Certificate



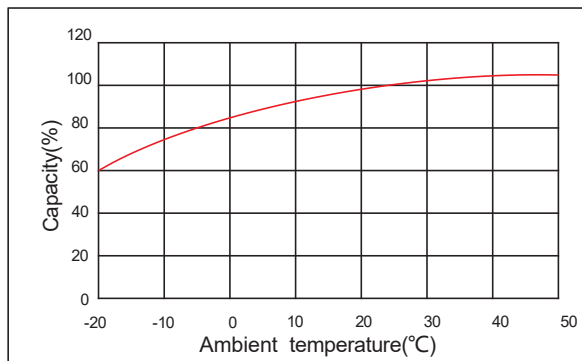
Discharge characteristic



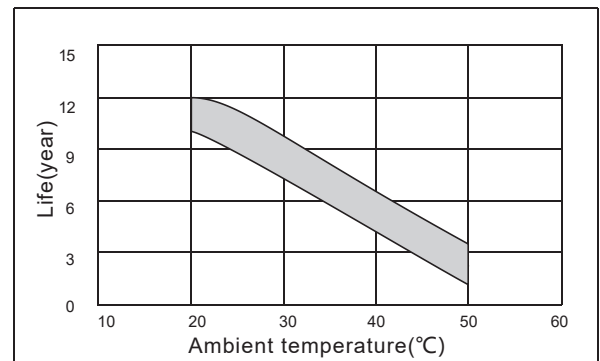
Charging characteristic



The effect of temperature on capacity



The effect of temperature on float life



Constant Current Discharge Characteristics Unit:A (25°C,77°F)

FV/Time	5min	10min	15min	30min	45min	1h	1.5h	2h	3h	4h	5h	6h	8h	10h	20h
1.60V	265	225	187	122	105	86.5	66.5	59.0	42.2	31.7	29.1	23.5	19.8	16.3	8.34
1.65V	245	208	175	115	100	85.0	65.5	57.5	41.1	31.4	28.4	23.2	19.5	16.1	8.24
1.70V	226	193	162	108	95.5	83.3	64.5	55.5	39.9	30.9	28.2	22.9	19.2	15.9	8.14
1.75V	201	173	148	101	91.5	82.5	63.5	53.5	38.7	30.4	27.4	22.5	19.0	15.6	8.00
1.80V	173	154	138	94.1	87.5	80.6	61.5	50.5	37.5	29.3	26.7	21.7	18.6	15.0	7.71
1.85V	152	135	122	83.7	78.0	72.7	60.5	47.1	35.6	29.0	25.8	21.4	18.1	14.9	7.52

Constant Power Discharge Characteristics Unit: W/cell (25°C,77°F)

FV/Time	5min	10min	15min	30min	45min	1h	1.5h	2h	3h	4h	5h	6h	8h	10h	20h
1.60V	445	381	331	224	193	162	125	111	79.3	60.5	55.3	44.8	37.9	31.5	16.3
1.65V	406	352	312	211	185	160	123	108	77.3	59.7	54.5	44.3	37.3	31.2	16.1
1.70V	389	326	291	197	177	157	121	104	75.1	58.6	53.5	43.6	36.8	30.8	16.0
1.75V	351	295	271	184	170	155	119	101	72.8	57.5	52.0	43.0	36.4	30.2	15.8
1.80V	311	265	256	173	162	151	115	94.9	70.5	56.2	50.7	41.4	35.6	29.2	15.2
1.85V	271	235	227	155	146	137	114	88.5	66.9	54.5	49.0	40.9	34.7	28.9	15.0