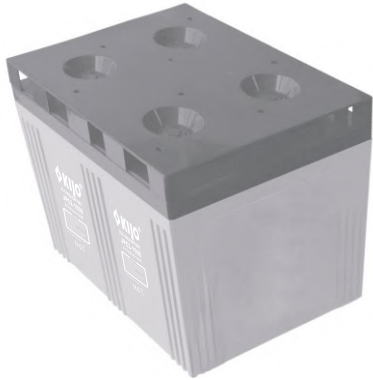


## JPC2-1500

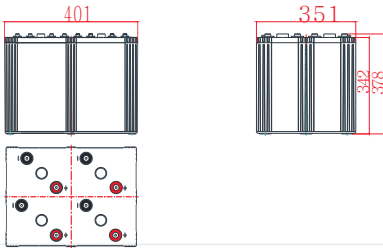


### General Features

- › Lead-carbon composite negative plate, both capacitance and battery characteristics
- › Long cycle life, excellent deep cycle discharge ability
- › Excellent charge acceptance ability
- › Optimized capability of instant high-current discharging
- › Strong high and low temperature performance
- › Precision sealing technology



Dimension: 401(L) × 351(W) × 342(H) × 378(TH) Unit: mm



Terminal Dimensions

### Applications

- › Solar / wind energy and other new energy storage
- › Hybrid vehicles, electric bicycles and other new energy vehicles
- › Other backup or cycle purposes

### Specification

Nominal Voltage	2V
Nominal Capacity	1500Ah
Design life	15 years
Terminal	M8
Approx. Weight	Approx 96kg (212lbs)
Container Material	ABS
Rated Capacity	<b>1500Ah</b> 10Hour Rate (150A to 1.80V)
	<b>1164Ah</b> 3Hour Rate (388A to 1.80V)
	<b>872Ah</b> 1Hour Rate (872A to 1.75V)
Internal resistance	Full charged at 25°C: 0.17 mΩ
Max. Discharge Current	12000A(5S)
Operating Temperature	Discharge: -40 ~60°C (-40~ 140°F)
	Charge: -20 ~50°C (-4~ 122°F)
	Storage: -20 ~50°C (-4~ 122°F)
Charge current:	Max.450A ; Recom.150~225A
Charge Method (25 °C)	Float Charge: 2.23-2.27V, recom. 2.25V (-3mV/ °C)
	Equalize charge: 2.30-2.35V, recom. 2.35V (-4mV/ °C)
	Cycle charge: 2.40-2.50V, recom. 2.40V (-5mV/ °C)
Self discharge	3% of capacity declined per month at 25°C

### Constant Current Discharge Characteristics Unit: A (25°C, 77°F)

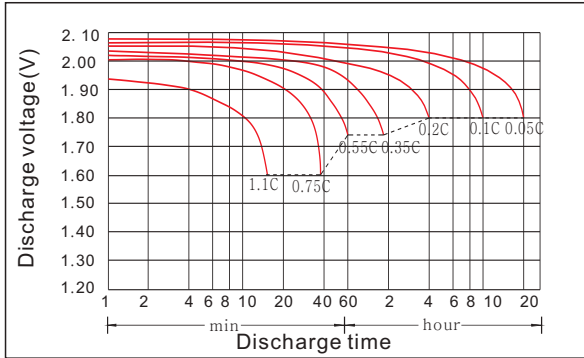
FV/Time	30min	1h	2h	3h	5h	8h	10h	20h
1.60V	1629	1010	595	437	294	200	164	87.8
1.65V	1529	958	581	426	287	197	163	87.0
1.70V	1435	915	560	414	284	194	160	85.7
1.75V	1334	872	540	401	276	191	158	84.4
1.80V	1248	817	511	388	270	188	150	82.5
1.85V	1113	744	476	369	261	182	150	80.0

### Constant Power Discharge Characteristics Unit: W (25°C, 77°F)

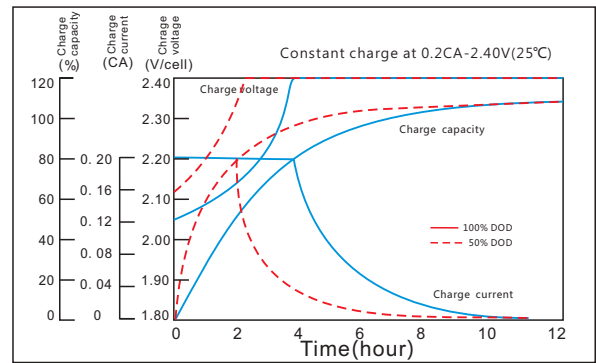
FV/Time	30min	1h	2h	3h	5h	8h	10h	20h
1.60V	2977	2081	1250	917	621	421	347	186
1.65V	2862	1923	1210	884	601	414	339	182
1.70V	2746	1831	1165	851	590	405	329	176
1.75V	2652	1759	1123	817	575	390	324	173
1.80V	2559	1657	1070	790	558	380	319	171
1.85V	2275	1532	978	749	534	368	307	164

# JPC2-1500

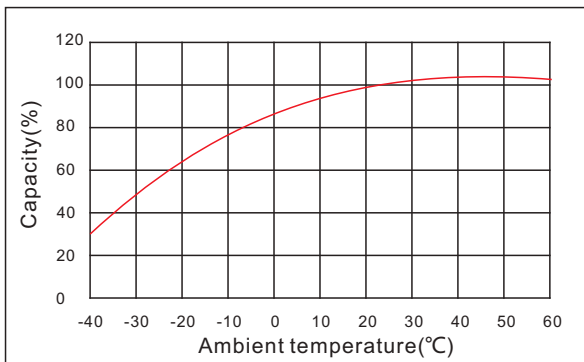
**Discharge characteristic**



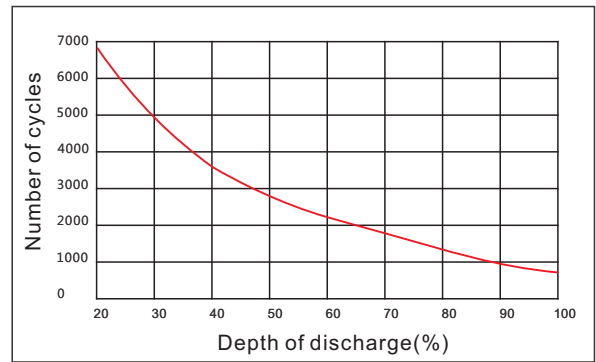
**Charging characteristic**



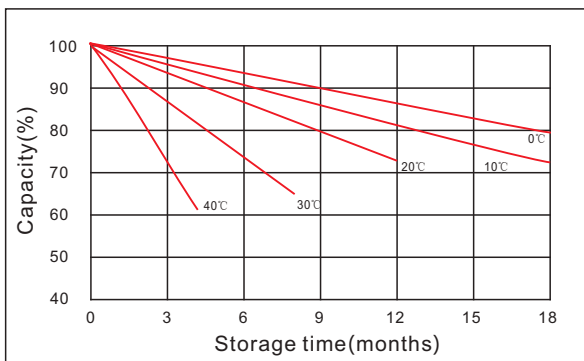
**The effect of temperature on capacity**



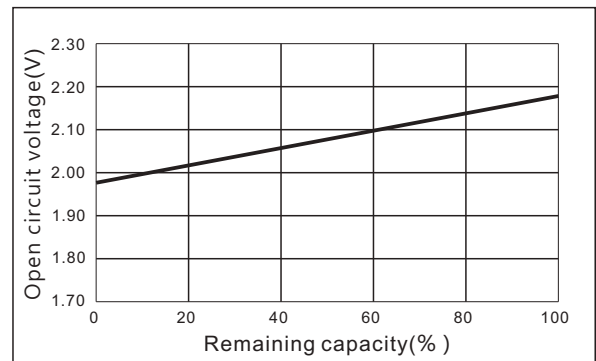
**The effect of discharge depth on cycle life**



**Curves of self-discharge**



**Curves of open circuit voltage vs. capacity**



[www.kijo.com.cn](http://www.kijo.com.cn)    [info@kijo.com.cn](mailto:info@kijo.com.cn)

**Jiangxi Jingjiu Power Science&Technology Co. Ltd.**  
Add: 1388 Fushan No.1 Street, Xiaolan Economic Development Zone, Nanchang City, Jiangxi Province, China.

+86-791-85982779    +86-791-85989842

**Jiangxi Jingjiu Power ( Jiujiang ) Co. Ltd.**  
Add: Xiwang Rd, Aicheng Industrial Park, Yongxiu Country, Jiujiang City, Jiangxi Province, China.

